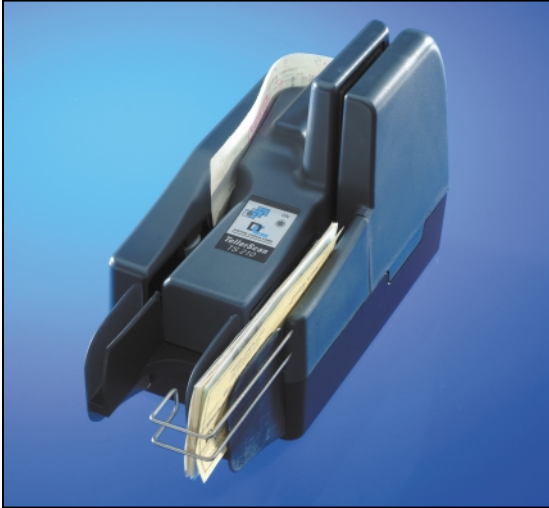


Digital Check's **TELLERSCAN® 210**

Compact Low Cost Check Scanner

Color Capable, Two-sided Scanning with Pocket & Upstream Endorsement



Features:

- **30 dpm Scan Speed**
- **In-line Best Read™ MICR for Maximum Accuracy**
- **Automatic Best Read Image to maximize image quality and CAR Read Rates**
- **Compact Design**
- **Upstream Endorsement to Facilitate Early Truncation**
- **Easy to Integrate - Common API & Network Upgradeability**
- **Reliable Single Pass Transport**

Single speed scanning:

◆ Digital Check's TS 210 single feed scanner is designed as a low cost reliable check image capture system for low volume environments. It captures images of both sides of a check at up to 30 items per minute while simultaneously capturing the MICR information. Featuring DCC's proven single pass transport with dual CIS image sensors, the TS 210 is the ideal scanner when upgrading from countertop MICR readers for low volume ARC payments; in commercial environments or for back office reject reentry / exception item processing.

Compact countertop design:

◆ Using just 5" x 8-1/2" of counter space, the TS 210 is ideal for areas where space is at a premium. A simple drop-in feeder ensures fast operation to quickly and reliably capture checks and other small documents such as deposit slips or remittance advices. In a customer service or teller environment, the capture speed and ease of feed, minimizes transaction time and customers' wait time. It also makes the TS 210 ideal for remote capture at commercial customers as well as remittance, NACHA's ARC or POP direct debit.

Unique in-line Best Read™ MICR for maximum accuracy:

◆ DCC scanners feature a true magnetic MICR reader to pass the magnetic code-line information to the controlling PC over the high speed USB2 link. Then, to ensure the highest level of accuracy in capturing the MICR information, DCC has developed Best Read™ MICR technology incorporating multiple verification methodologies. If required, this can be supplemented with downloaded verification tables creating a triple verification technique. The result is the highest MICR accuracy read rate available at the countertop today.

Reliable single pass transport:

◆ A short U shaped transport path saves space and virtually eliminates jams with one pass by the separate front and rear scan heads. The TS 210 transport is designed to scan up to 10 million items. Together with diagnostic tools and an easy to service modular design, the TS 210 will ensure reliable, problem-free operation.

Programmable upstream endorsement to facilitate early image based truncation:

◆ The TS 210 features a new high capacity 3-position HP programmable inkjet endorser to print endorsements (such as dates, sequential numbers, logos, etc.) on the back of the checks before scanning. This pre-scan non-contact endorser uses commonly available high capacity HP ink cartridges and enables checks to be truncated at the earliest stage. This inkjet endorser creates a clear and legible endorsement which is easy to read from the image of the check.

Highest definition images maximizes CAR/LAR recognition:

◆ DCC's new tricolor CIS module offers the highest image definition available in today's countertop check scanners. As a check is scanned, it is analyzed before adaptively thresholding it into black and white (bitonal). DCC's Best Read image technology sharpens characters and provides a clear, easy to read image which is 'recognition friendly' even on the most challenging checks. Combined with DCC's anti-skew transport, this makes for superior OCR/ICR recognition of machine print, courtesy and legal amounts, signatures, and name/address information. Alternatively, 4 bit (16 shades), 8 bit (256 shades) grayscale or 24 bit (over 16 million colors) images may be captured for easy viewing together with the black and white image for recognition.

Easy to integrate - common API & network upgradeability:

◆ All DCC TellerScan® scanners are simple to integrate. The state-of-the-art high speed USB2 port allows plug-and-play connection – there is no need to purchase separate interface boards or to even open the controlling PC. A common API allows all DCC TellerScan® scanners to operate from the same code. This reduces your implementation time, allows you to easily mix and match the scanners within a bank, reducing software maintenance costs. Should a new version of firmware be released, each scanner can be updated remotely over the network.

TELLERSCAN[®] 210

Compact Low Cost Check Scanner



Specifications

Product Features

Unit Size: 5.1" x 8.6" (paper trays add 2-3 inches)

Paper Size: (Up to UNI A6)

Document Height: 2.12" - 4.17" (54-106mm)

Document Length: 3.19" - 8.97" (80-228mm)

Document Weight: 16-32 lb. (60-120 grams/sq.meters)

Scanning Method: Concurrent two-sided Duplex

Image Creation: 2 x 850 cell, 108mm CIS

Light Source: Tricolor LED

Endorser: Programmable ink jet, prior to scan. 12 dots/ch height
Variable fonts, 3 manually selectable positions.

Estimated Yield: from 5-7M characters

Cartridge: Hewlett Packard 6602A

In-Line MICR Recognition: MICR recognition firmware for
E13B (U.S.A.), CMC7 (European), CMC0 standards

Magnetic MICR waveform passed to PC

MICR codeline data available as a separate file or in image header

Transport Speed: 19.7" (50 cm) per second

Performance: Up to 30 x 6" items per minute. Depends upon scanning
mode selected, interface and power of host computer.

Standard Interface:

- Standard USB2.0 for maximum rated speed
(USB1.1 compatible -- approx. 15 dpm)
- RS-232 for service and MICR reader emulation

Image Capture:

- 24-bit (16m shades) -color
- 8-bit (256 levels) - grayscale
- 1-bit black and white or 4 bit grayscale, software selectable through API

Image Resolution: 200 x 200 dpi

100 x 100 dpi, 200 x 100 dpi (V x H) software selectable through API

Image Formats & Compression:

TIFF Gp/4, JPEG or BMP via custom software running on workstation
Automatic image cropping

Diagnostic Features

Diagnostic Tools: Allows for full testing of scanner functionality

Serviceability: Flash EEPROM allows easy upgrade of functionality

Software Tools & Support Services

Software Tools: API Toolkit 32 bit

Required Operating System: Windows 2000, Windows XP

Recommended Workstation: 2.4Ghz P4 processor w. 256MB RAM,
250MB free disk space, USB 2.0 port

Environmental, Reliability & Electrical Features

Electrical: Power consumption: 50VA

Input voltage: 115 VAC (+/- 10%), 60hz - domestic

230 VAC (+/- 10%), 50hz - international

Separate standard power supply

Product Life & Duty Cycle:

Designed for useful life of 10,000,000 checks

Duty cycle: 1,000 - 2,000 items per day

Mean Time To Repair (MTTR): 15 minutes

Environmental:

Temperature (operating): 60° - 90° F (15° - 32° C)

Humidity (operating): 35-85% non-condensing

Unit Dimensions:

Height - 6.6" (17cm)

Depth - 5.1" (13cm)

Length - 8.6" (21.7cm) (11" - 27.9cm incl. I/O trays)

Weight - 4.4 lbs. (2kg)



*Learn more about the entire line of TellerScan[®] Check Scanners
and DCC on our website <http://www.digitalcheck.com>*



466 Central Ave., Suite 31 • Northfield, IL 60093 • Tel: 847/446-2285 • Fax: 847/441-5507

<http://www.digitalcheck.com>

TellerScan is a registered trademark of Digital Check Corporation
Best Read is a registered trademark of Digital Check Corporation.
Windows is a registered trademark of Microsoft Corporation.
HP is the registered trademark of Hewlett Packard