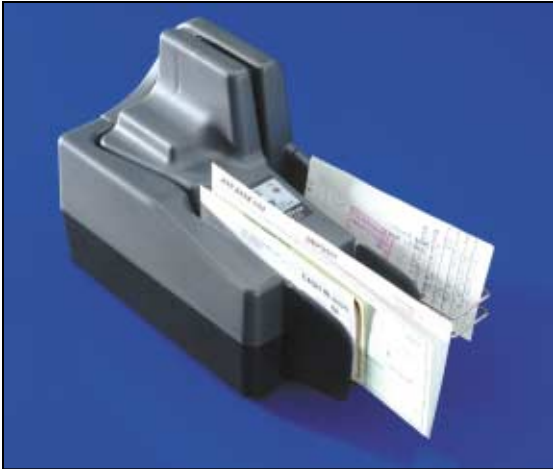


# Digital Check's **TELLERSCAN<sup>®</sup> 220E**

## For Corporate Remote Capture, Teller and Other Distributed Capture Applications

*Two-sided Scanning with Feeder, Pocket and Upstream Endorsement*



### Features:

- **Highest Definition Images Drives IQA & Usability**
- **Upstream Endorsement to Facilitate Check 21 Image Exchange**
- **40 dpm Scan Speed with up to 40 Item Self Adjusting Autofeeder**
- **Advanced Best Read<sup>®</sup> MICR for Maximum Accuracy**
- **Smallest Footprint to Fit Corporate Office or Teller Window**
- **Easy to Integrate - Common API and Remote Support**
- **Reliable Quiet Single Pass Transport**

### Highest definition images drive IQA & U and maximize CAR/LAR recognition:

◆ Digital Check's enhanced TS 220E leverages from the market leading TS 220 to create the highest quality images of both sides of a check at up to 40 items per minute. Digital Check is the leading scanner vendor for both Branch Automation and Remote Capture – TS 220s are being used in major US banks and corporate customers to scan over 100 million items per month.

◆ Dual tricolor CIS modules provide the highest image definition available with today's countertop check scanners. As each check is scanned, it is analyzed before adaptive thresholding into black and white using proprietary software technology to sharpen the edges of characters. This provides a clear, easy to read image that supports Check 21 Image Quality and Usability (IQA & U) standards. Combined with an anti-skew transport, this gives superior CAR/LAR (courtesy and legal amount recognition), OCR/ICR recognition of machine print, signatures, and name/address information. Very challenging items may be captured with 4 bit (16 shades) or 8 bit (256 shades) grayscale or 24 bit color images.

### Programmable upstream endorsement for Check 21 image exchange:

◆ The TS 220E programmable inkjet endorser prints endorsements (such as dates, sequential numbers, logos, etc.) on the back of the checks before scanning. This pre-scan non-contact endorser uses commonly available high capacity HP ink cartridges enabling checks to be image truncated at the earliest stage. The endorser's crisp legible endorsement, captured in the rear image of the check, is ideal for Check 21 image exchange.

### Compact improved quieter design for teller or corporate environments:

◆ Using just 5" x 8 1/2" of desktop or counter space, the TS 220E is built for use in low volume Check 21, ARC or POP applications in remote deposit and

distributed branch capture environments. A new micro processor controlled solenoid makes for quieter operation, while the self adjusting jam resistant feeder and double feed detection ensure no piggy-backed or missed items. New exit pocket tabs and sensor keep large batches of checks, including business checks, in place.

### Advanced Best Read<sup>®</sup> MICR for maximum accuracy:

◆ A new magnetic MICR reader captures and passes the magnetic codeline information smoothly to the controlling PC over a high-speed USB2 link. For decoding this MICR information, Digital Check has developed a Best Read<sup>®</sup> MICR technology to maximize the MICR line accuracy with multiple verification. This can be supplemented with downloaded verification tables. The triple verification technique enables Digital Check's scanners to offer the highest MICR accuracy read rate.

### Reliable single pass transport:

◆ A short U shaped transport path with separate front and rear scan heads is driven by a new long-lasting belt drive and auto-tensioner providing smoother operation for optimal feeding, fewer jams and higher reliability. It even handles thick checks such as those 'rebate' checks sent through the mail as postcards. Diagnostic tools and an easy to service modular design ensure reliable, problem-free operation.

### Easy to integrate - common API & remote support:

◆ All Digital Check TellerScan scanners are quick and easy to integrate. The state-of-the-art USB2 port allows plug-and-play connection - no need to purchase separate interface boards or to even open the controlling PC. A common API allows all TellerScan scanners to operate from the same code. This reduces your implementation time and allows you to easily mix and match the scanners within an organization reducing software maintenance costs. Remote support tools can log errors so that they can be interrogated remotely - and should a new version of firmware be released, each scanner can be updated remotely over the network.



*Providing Check Scanning Solutions & Check Scanning Equipment Worldwide*

# TELLERSCAN® 220E

For Corporate Remote Capture, Teller and Other Distributed Capture Applications

## Specifications

### Product Features

**Unit Size:** 5.1" x 8.6" (paper trays add 2-3 inches)

**Paper Size:** (Up to UNI A6)

**Document Height:** 2.12" - 4.17" (54-106mm)

**Document Length:** 3.19" - 8.97" (80-228mm)

**Document Weight\*:** 16-32 lb. (60-120 grams/sq.meters)

\*Can process batches with interleaved card stock

### Motorized Autofeeder:

**Capacity:** 1-25 items (up to 40 items depending on document thickness and condition)

### Double Feed Detection:

Infra-red based transmissive device. Software adjustable programmable double feed delay performs skip-over function

### Scanning Method: Concurrent two-sided Duplex

**Image Creation:** 2 x 850 cell, 108mm CIS

**Light Source:** Tricolor LED

**Endorser:** Programmable ink jet, prior to scan.  
12 dots/ch height. Variable fonts.

**Estimated Yield:** 5-7M characters

**Cartridge:** Hewlett Packard 6602A

**In-Line MICR Recognition:** MICR recognition firmware for E13B (U.S.A.), CMC7 (European), CMC0 standards

Magnetic MICR waveform passed to PC

MICR codeline data available as a separate file or in image header

**Transport Speed:** 19.7" (50 cm) per second

**Performance:** Up to 40 x 6" items per minute. Depends upon scanning mode selected, interface and power of host computer.

### Standard Interface:

- Standard USB2 (USB1.1 compatible -- approx. 15 dpm)

### Image Capture:

8-bit (256 levels) - grayscale

1-bit black and white or 4 bit grayscale, software selectable through API

24 bit JPEG color compressed or BMP color uncompressed

**Image Resolution:** 200 x 200 dpi

100 x 100 dpi, 200 x 100 dpi (V x H) software selectable through API

### Image Formats & Compression:

TIFF Gp/4, JPEG or BMP via custom software running on workstation

Automatic image cropping



### Diagnostic Features

**Diagnostic Tools:** Allows for full testing of scanner functionality

**Serviceability:** Flash EEPROM allows easy upgrade of functionality

### Firmware

Ts 220 Firmware.bin which comes with API v 8.05 or later

### Software Tools & Support Services

**Software Tools:** API Toolkit 32 bit

**Required Operating System:** Windows 2000, Windows XP

**Required dll:** Ts 2dll.dll which comes with API v 8.05 or later

### Environmental, Reliability & Electrical Features

**Electrical:** Power consumption: 50VA

**Input voltage:** 115 VAC (+/- 10%), 60hz - domestic

230 VAC (+/- 10%), 50hz - international

Separate standard power supply

### Product Life & Duty Cycle:

Duty cycle: 1,000 - 2,000 items per day

Mean Time To Repair (MTTR): 15 minutes

### Environmental:

**Temperature (operating):** 60° - 90° F (15° - 32° C)

**Humidity (operating):** 35-85% non-condensing

### Unit Dimensions:

**Height** - 6.6" (17cm)

**Depth** - 5.1" (13cm)

**Length** - 8.6" (21.7cm)

(11" - 27.9cm incl. I/O trays)

**Weight** - 4.4 lbs. (2kg)



Learn more about the entire line of TellerScan® Check Scanners and DCC on our website <http://www.digitalcheck.com>



466 Central Ave., Suite 31 • Northfield, IL 60093 • Tel: 847/446-2285 • Fax: 847/441-5507

<http://www.digitalcheck.com>

TellerScan is a registered trademark of Digital Check Corporation  
Best Read is a registered trademark of Digital Check Corporation.  
Windows is a registered trademark of Microsoft Corporation.  
HP is the registered trademark of Hewlett Packard